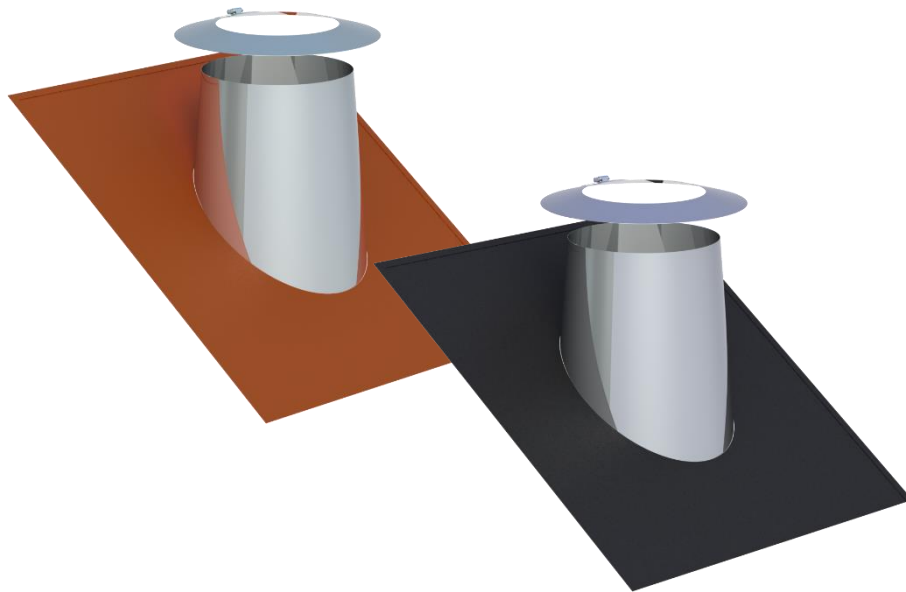


Flashing kit with elastomer sealing zone FOR DOUBLE WALL CHIMNEY SYSTEMS



1. GENERAL

Our flashing kits with elastomer sealing zone are the environmentally friendly alternative to the conventional versions with lead edge. The material used is very flexible and can therefore be individually adapted to the existing roof covering on site. Special tools and dangerous welding/soldering work are not necessary.

2. SAFETY NOTES

When working at great heights and in the roof area, ensure that safety and support systems are in place. The general safety regulations for occupational safety apply!

All tools and components must be secured against falling during assembly or appropriate restraining and catching devices must be installed.

When using fixed or mobile scaffolding and working platforms, the relevant safety regulations must be strictly observed.

When drilling into walls or ceilings, the installation site must be checked for power cables, water and gas pipes using appropriate measuring tools before starting work.

If necessary, consult the building plans to ensure that no load-bearing beams in the building structure are damaged or weakened.

Note:



Using tools can be dangerous to the user. For this reason, the corresponding operating instructions and accident prevention regulations must be adhered to and the necessary protective equipment/gear must be used!

3. SPECIAL NOTES

- The flashing kits are equipped with their own adhesive surface, facilitating direct bonding to the roof covering. It is essential to ensure that the substrates are dry and completely free from dust, oil, grease, silicone, and ice to achieve optimal adhesion.
- The distance of the elastomer sealing zone must not exceed 50 mm to ensure proper support. Otherwise, additional widening of i.e. the lath construction is necessary.
- If the roof covering consists of profiled roof tiles, please ensure that the elastomer sealing extends into the next depression and water channels. An overlap of at least 120 mm is required for flat tiles.
- Water and puddles have to be avoided.
- An adhesive primer is required for sandy and absorbent surfaces.



Attention: The following substances cause damage to the elastomer sealing:

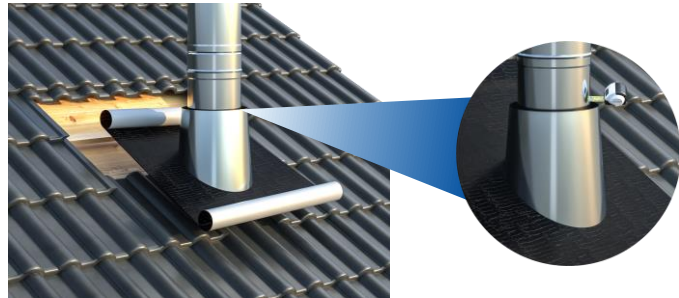


- | | |
|--------------|--------------------------------------|
| ▶ Bitumen | ▶ Grease |
| ▶ Tar | ▶ Nitro thinner |
| ▶ Turpentine | ▶ Oils |
| ▶ Petrol | ▶ Hydrochloride acid tetrahydrofuran |

4. INSTALLATION OF THE FLASHING KIT



1. Installation of the flue gas system through the roof cladding. A row of roof tiles has to be removed above the chimney.



2. Place the flashing kit over the double-walled flue gas system and center it.

Attention: Clean the roof covering beforehand!

If the substrate is sandy or absorbent, apply primer in advance. Follow the application instructions.



3. Remove the protective film on the bottom and press the elastomer sealing lightly onto the roof covering to fix the position.

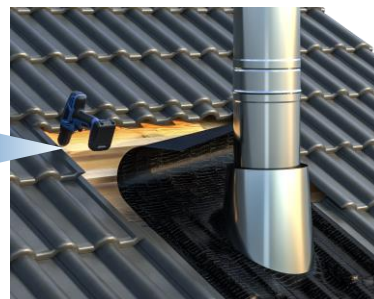


4. Form the adhesive flange to the roof covering from the center below, left and right of the exhaust system.



5. The adhesive flange must be subsequently pressed onto the roof surface with a firm tool, e.g. squeegee, roller, to ensure sealing.

Attention: Don't use pointed or sharp objects.

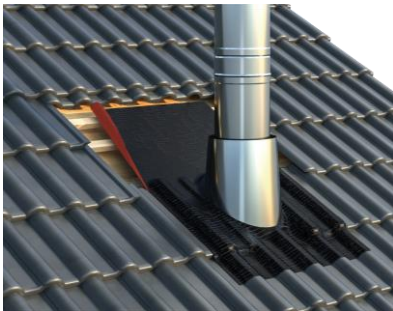


6. An additional roof lath may be required on the ridge side to fasten the roof duct. Cut this to length accordingly and nail/screw it to the rafters.

Note:



Mount the roof batten approx. 5 cm below the upper edge of the elastomer sealing.



7. Fold the side edges up to create a drainage gutter.



8. Also fold the top edge downwards to form a gutter. This prevents water from entering the roof structure.



9. Now place the sealing surface on the roof batten installed in step 6 and fix it with nails on the right, left and in the middle.

Attention: Avoid damaging the elastomer sealing with imprecise hammer blows.

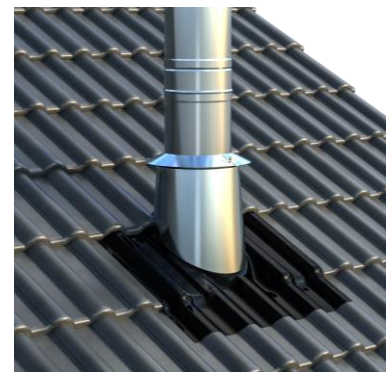


10. Restore the roof covering; some roof tiles may have to be adapted to the shape of the cone.



11. Attach the weather collar.

Attention: To ensure rear ventilation, fit weather collar with approx. 3 cm distance from the cone.



12. Finished flashing kit with elastomer sealing.